

\$649,900 - 6 Overton Place, St. Albert

MLS® #E4431060

\$649,900

4 Bedroom, 3.50 Bathroom, 2,379 sqft

Single Family on 0.00 Acres

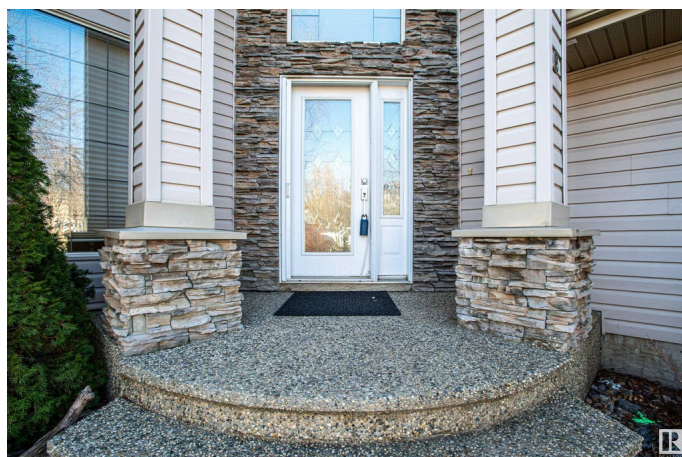
Oakmont, St. Albert, AB

This is a terrific opportunity! Nearly 2,400 square feet of majestic home with a fully developed WALK-OUT basement. Located on a quiet street in the heart of Oakmont, close to trails and the Sturgeon River. This home boasts 2 furnaces with AC, a quiet street, and terrific curb appeal. You'll love the large rooms and spaces, welcoming feel, and WALK THROUGH PANTRY. It's obvious that whomever designed this house hit a home run. The 1 word that comes to mind when touring this home is LIGHT. There's so much natural light on all levels, you're going to absolutely LOVE living here.

Built in 2000

Essential Information

| | |
|----------------|------------------------|
| MLS® # | E4431060 |
| Price | \$649,900 |
| Bedrooms | 4 |
| Bathrooms | 3.50 |
| Full Baths | 3 |
| Half Baths | 1 |
| Square Footage | 2,379 |
| Acres | 0.00 |
| Year Built | 2000 |
| Type | Single Family |
| Sub-Type | Detached Single Family |



| | |
|--------|----------|
| Style | 2 Storey |
| Status | Active |

Community Information

| | |
|-------------|-----------------|
| Address | 6 Overton Place |
| Area | St. Albert |
| Subdivision | Oakmont |
| City | St. Albert |
| County | ALBERTA |
| Province | AB |
| Postal Code | T8N 6W9 |

Amenities

| | |
|----------------|---|
| Amenities | Air Conditioner, Deck, Detectors Smoke, Exterior Walls- 2"x6", Hot Water Natural Gas, Vinyl Windows, Walkout Basement |
| Parking Spaces | 4 |
| Parking | Double Garage Attached |

Interior

| | |
|-------------------|--|
| Interior Features | ensuite bathroom |
| Appliances | Dishwasher-Built-In, Dryer, Hood Fan, Refrigerator, Stove-Electric, Washer, Window Coverings |
| Heating | Forced Air-2, Natural Gas |
| Fireplace | Yes |
| Fireplaces | Mantel |
| Stories | 3 |
| Has Basement | Yes |
| Basement | Full, Finished |

Exterior

| | |
|-------------------|---|
| Exterior | Wood, Stone, Stucco |
| Exterior Features | Fenced, Landscaped, No Back Lane, No Through Road, Park/Reserve, Playground Nearby, Public Transportation, Schools, Shopping Nearby |
| Roof | Asphalt Shingles |
| Construction | Wood, Stone, Stucco |
| Foundation | Concrete Perimeter |

Additional Information

| | |
|----------------|------------------|
| Date Listed | April 14th, 2025 |
| Days on Market | 5 |

Zoning

Zone 24

DATA IS DEEMED RELIABLE BUT IS NOT GUARANTEED ACCURATE BY THE REALTORS® ASSOCIATION OF EDMONTON. COPYRIGHT 2025 BY THE REALTORS® ASSOCIATION OF EDMONTON. ALL RIGHTS RESERVED. Trademarks are owned or controlled by the Canadian Real Estate Association (CREA) and identify real estate professionals who are members of CREA (REALTOR®, REALTORS®) and/or the quality of services they provide (MLS®, Multiple Listing Service®)

Listing information last updated on April 19th, 2025 at 8:47am MDT