

# \$430,000 - 13236 115 Avenue, Edmonton

MLS® #E4430357

**\$430,000**

4 Bedroom, 2.00 Bathroom, 988 sqft

Single Family on 0.00 Acres

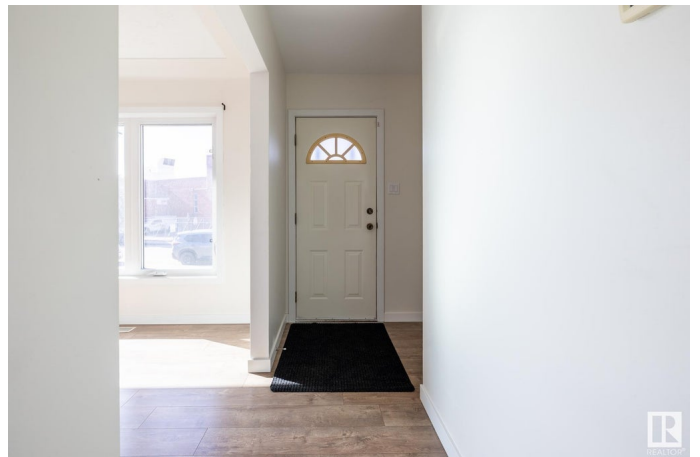
Woodcroft, Edmonton, AB

A SUPERB UPGRADED FAMILY HOME IN THE DESIREABLE NEIGHBORHOOD OF WOODCROFT. This 988 sq ft 4 bedroom, 2 bath bungalow has many upgrades: vinyl windows; flooring; bathrooms; recent painting; shingles on house & garage; garage doors & garage man-door. The downstairs can easily be changed to an in-law suite. This home sits on a 50 ft x 125 ft corner lot so would be ideal for sub-dividing and re-development. The corner lot also allows easy access to the garage and the RV parking. You will be close to everything: schools; shopping; medical; restaurants; parks; Telus Science. Check this family home out.

Built in 1954

## Essential Information

MLS® #	E4430357
Price	\$430,000
Bedrooms	4
Bathrooms	2.00
Full Baths	2
Square Footage	988
Acres	0.00
Year Built	1954
Type	Single Family
Sub-Type	Detached Single Family



Style Bungalow  
Status Active

### Community Information

Address 13236 115 Avenue  
Area Edmonton  
Subdivision Woodcroft  
City Edmonton  
County ALBERTA  
Province AB  
Postal Code T5M 3A6

### Amenities

Amenities On Street Parking, Deck, No Animal Home, No Smoking Home, R.V. Storage, Vinyl Windows  
Parking Spaces 6  
Parking Double Garage Detached, RV Parking

### Interior

Appliances Dishwasher-Built-In, Dryer, Garage Opener, Hood Fan, Refrigerator, Stove-Electric, Washer  
Heating Forced Air-1, Natural Gas  
Stories 2  
Has Basement Yes  
Basement Full, Finished

### Exterior

Exterior Wood, Stucco  
Exterior Features Back Lane, Corner Lot, Fenced, Landscaped, Playground Nearby, Public Transportation, Schools, Shopping Nearby  
Roof Asphalt Shingles  
Construction Wood, Stucco  
Foundation Concrete Perimeter

### Additional Information

Date Listed April 11th, 2025  
Days on Market 7  
Zoning Zone 07

DATA IS DEEMED RELIABLE BUT IS NOT GUARANTEED ACCURATE BY THE REALTORS® ASSOCIATION OF EDMONTON. COPYRIGHT 2025 BY THE REALTORS® ASSOCIATION OF EDMONTON. ALL RIGHTS

RESERVED. Trademarks are owned or controlled by the Canadian Real Estate Association (CREA) and identify real estate professionals who are members of CREA (REALTOR®®, REALTORS®®) and/or the quality of services they provide (MLS®®, Multiple Listing Service®®)

Listing information last updated on April 18th, 2025 at 7:47pm MDT