

\$197,800 - 102 16725 106 Street, Edmonton

MLS® #E4429889

\$197,800

2 Bedroom, 1.50 Bathroom, 1,142 sqft
Condo / Townhouse on 0.00 Acres

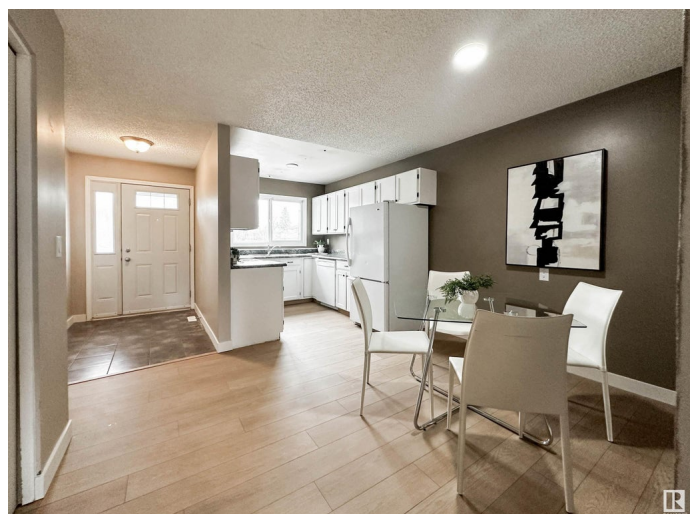
Baturyn, Edmonton, AB

Amazing investment opportunity in Castle Crescent. This 2 bedroom townhouse has been updated with new flooring and offers a spacious open and bright living space. Large 4 piece bath upstairs is a perfect space to share with jacuzzi tub and stand up shower. Basement is partially developed with large rec space, spacious laundry room, and ample storage. NEW HWT 2021 & FURNACE 2024! Windows and roof have been updated through condo. South facing yard is private and filled with sun, and features a newer deck! TWO parking stalls! Quiet complex is located within walking distance to amenities and major bus routes!

Built in 1981

Essential Information

MLS® #	E4429889
Price	\$197,800
Bedrooms	2
Bathrooms	1.50
Full Baths	1
Half Baths	1
Square Footage	1,142
Acres	0.00
Year Built	1981
Type	Condo / Townhouse



Sub-Type	Townhouse
Style	2 Storey
Status	Active

Community Information

Address	102 16725 106 Street
Area	Edmonton
Subdivision	Baturyn
City	Edmonton
County	ALBERTA
Province	AB
Postal Code	T5X 5G5

Amenities

Amenities	Deck, Exterior Walls- 2"x6", See Remarks
Parking Spaces	2
Parking	2 Outdoor Stalls

Interior

Appliances	Dishwasher-Built-In, Dryer, Microwave Hood Fan, Refrigerator, Stove-Electric, Washer
Heating	Forced Air-1, Natural Gas
Stories	2
Has Basement	Yes
Basement	Full, Partially Finished

Exterior

Exterior	Wood, Stucco
Exterior Features	Fenced, Playground Nearby, Public Transportation, Schools, Shopping Nearby, See Remarks
Roof	Asphalt Shingles
Construction	Wood, Stucco
Foundation	Concrete Perimeter

Additional Information

Date Listed	April 9th, 2025
Days on Market	9
Zoning	Zone 27
Condo Fee	\$433

DATA IS DEEMED RELIABLE BUT IS NOT GUARANTEED ACCURATE BY THE REALTORS® ASSOCIATION OF EDMONTON. COPYRIGHT 2025 BY THE REALTORS® ASSOCIATION OF EDMONTON. ALL RIGHTS RESERVED. Trademarks are owned or controlled by the Canadian Real Estate Association (CREA) and identify real estate professionals who are members of CREA (REALTOR®, REALTORS®) and/or the quality of services they provide (MLS®, Multiple Listing Service®)

Listing information last updated on April 18th, 2025 at 8:02pm MDT