

## \$479,000 - 56 Deerbourne Drive, St. Albert

MLS® #E4429020

**\$479,000**

4 Bedroom, 2.50 Bathroom, 1,149 sqft

Single Family on 0.00 Acres

Deer Ridge (St. Albert), St. Albert, AB

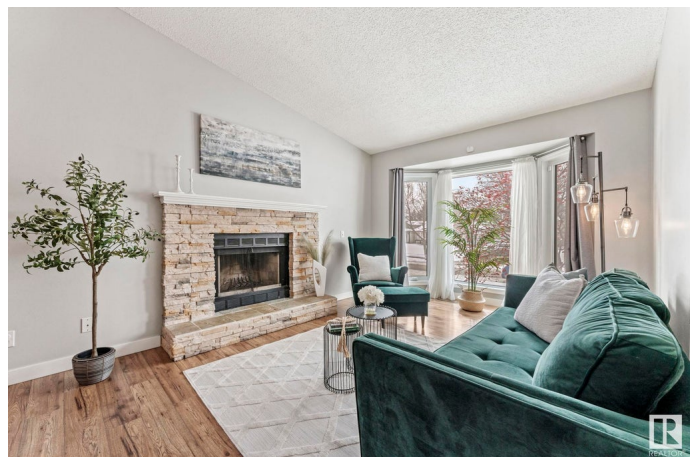
Welcome to this upgraded bi-level, perfectly nestled in the heart of Deer Ridge - a neighbourhood known for its family-friendly charm. Step inside to find neutral decor & a cozy living room featuring a wood-burning fireplace. Adjacent is the dining room with a gorgeous brick feature wall. The bright eat-in kitchen boasts stainless steel appliances, new dishwasher, ample workspace, & patio doors leading to the backyard. The primary bedroom offers double closets & a 2 pce ensuite. Two additional bedrooms & a 4 pce bath complete the main level. Downstairs, the f/f basement is flooded with natural light & features 2 large living areas, bedroom, office/addt'l bdrm & a 3 pce bath. The laundry & storage area complete this level. Outside, enjoy the landscaped yard, deck & double attached garage. The furnace, A/C & humidifier were replaced in 2024 & the HWT is brand new! Located just steps away from a playground & huge green space, this home is close to schools, parks, shopping, restaurants, & countless amenities.

Built in 1990

### Essential Information

MLS® # E4429020

Price \$479,000



Bedrooms	4
Bathrooms	2.50
Full Baths	2
Half Baths	1
Square Footage	1,149
Acres	0.00
Year Built	1990
Type	Single Family
Sub-Type	Detached Single Family
Style	Bi-Level
Status	Active

### Community Information

Address	56 Deerbourne Drive
Area	St. Albert
Subdivision	Deer Ridge (St. Albert)
City	St. Albert
County	ALBERTA
Province	AB
Postal Code	T8N 4R2

### Amenities

Amenities	Air Conditioner, Deck
Parking	Double Garage Attached

### Interior

Interior Features	ensuite bathroom
Appliances	Air Conditioning-Central, Dishwasher-Built-In, Dryer, Garage Opener, Microwave Hood Fan, Refrigerator, Stove-Electric, Washer, Window Coverings
Heating	Forced Air-1, Natural Gas
Fireplace	Yes
Fireplaces	Brick Facing
Stories	2
Has Basement	Yes
Basement	Full, Finished

### Exterior

Exterior	Wood, Brick, Vinyl
----------	--------------------

Exterior Features	Fenced, Golf Nearby, Landscaped, Playground Nearby, Public Transportation, Schools, Shopping Nearby
Roof	Asphalt Shingles
Construction	Wood, Brick, Vinyl
Foundation	Concrete Perimeter

**Additional Information**

Date Listed	April 4th, 2025
Days on Market	13
Zoning	Zone 24

DATA IS DEEMED RELIABLE BUT IS NOT GUARANTEED ACCURATE BY THE REALTORS® ASSOCIATION OF EDMONTON. COPYRIGHT 2025 BY THE REALTORS® ASSOCIATION OF EDMONTON. ALL RIGHTS RESERVED.Trademarks are owned or controlled by the Canadian Real Estate Association (CREA) and identify real estate professionals who are members of CREA (REALTOR®, REALTORS®) and/or the quality of services they provide (MLS®, Multiple Listing Service®)

Listing information last updated on April 17th, 2025 at 6:32am MDT