

\$425,000 - 286 Rolston Wynd, Leduc

MLS® #E4427762

\$425,000

3 Bedroom, 2.50 Bathroom, 1,434 sqft
Single Family on 0.00 Acres

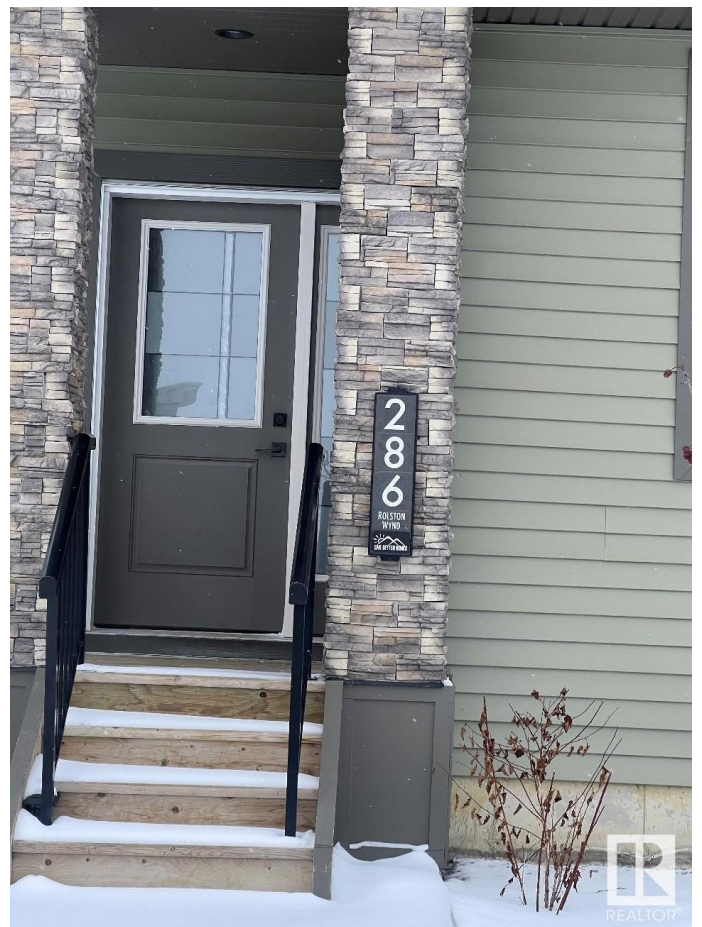
Robinson, Leduc, AB

This amazing half duplex is the perfect home for your growing family, situated in the family friendly community of Robinson and walking distance to various parks and trails with no Condo/Maintenance Fee! The beautiful, open concept floor plan offers an enormous front and back window allowing for maximum natural light, modern finishes in the kitchen with a huge island, ideal for entertaining. The second floor offers a primary bedroom with a walk-in closet and an ensuite, along with two generously sized bedrooms and another full bath and a convenient laundry. The unfinished basement with a separate entrance offers potential for a secondary suite, ready for your personal touch. This duplex is ideal for families and first-time home buyers, don't miss it!

Built in 2019

Essential Information

| | |
|----------------|-----------|
| MLS® # | E4427762 |
| Price | \$425,000 |
| Bedrooms | 3 |
| Bathrooms | 2.50 |
| Full Baths | 2 |
| Half Baths | 1 |
| Square Footage | 1,434 |
| Acres | 0.00 |



| | |
|------------|---------------|
| Year Built | 2019 |
| Type | Single Family |
| Sub-Type | Half Duplex |
| Style | 2 Storey |
| Status | Active |

Community Information

| | |
|-------------|------------------|
| Address | 286 Rolston Wynd |
| Area | Leduc |
| Subdivision | Robinson |
| City | Leduc |
| County | ALBERTA |
| Province | AB |
| Postal Code | T9E 1G5 |

Amenities

| | |
|-----------|---|
| Amenities | Closet Organizers, Deck, Exterior Walls- 2"x6", No Animal Home, No Smoking Home |
| Parking | Double Indoor |

Interior

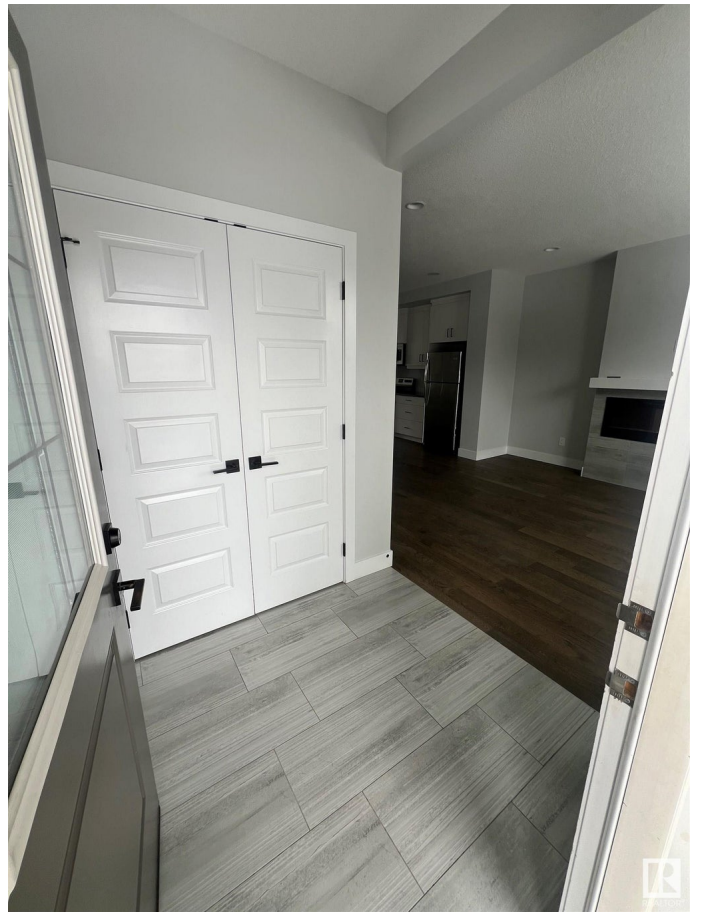
| | |
|-------------------|--|
| Interior Features | ensuite bathroom |
| Appliances | Dishwasher-Built-In, Dryer, Hood Fan, Refrigerator, Stove-Electric, Washer |
| Heating | Forced Air-1, Natural Gas |
| Fireplace | Yes |
| Fireplaces | Mantel |
| Stories | 2 |
| Has Basement | Yes |
| Basement | Full, Unfinished |

Exterior

| | |
|-------------------|---|
| Exterior | Wood, Vinyl |
| Exterior Features | Airport Nearby, Back Lane, Golf Nearby, Landscaped, Playground Nearby, Schools, Shopping Nearby |
| Roof | Asphalt Shingles |
| Construction | Wood, Vinyl |
| Foundation | Concrete Perimeter |

Additional Information

Date Listed March 27th, 2025
Days on Market 8
Zoning Zone 81



DATA IS DEEMED RELIABLE BUT IS NOT GUARANTEED ACCURATE BY THE REALTORS® ASSOCIATION OF EDMONTON. COPYRIGHT 2025 BY THE REALTORS® ASSOCIATION OF EDMONTON. ALL RIGHTS RESERVED. Trademarks are owned or controlled by the Canadian Real Estate Association (CREA) and identify real estate professionals who are members of CREA (REALTOR®, REALTORS®) and/or the quality of services they provide (MLS®, Multiple Listing Service®)

Listing information last updated on April 4th, 2025 at 3:47pm MDT