

\$524,900 - 61 Nottingham Road, Sherwood Park

MLS® #E4426501

\$524,900

4 Bedroom, 3.00 Bathroom, 1,313 sqft
Single Family on 0.00 Acres

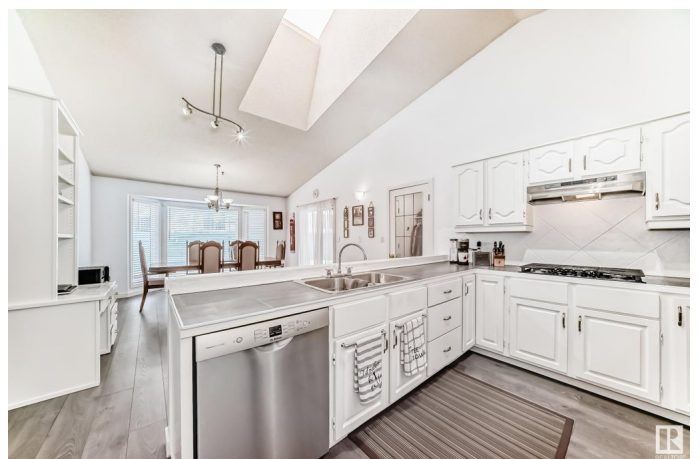
Nottingham, Sherwood Park, AB

NOTTINGHAM GEM!! This beautifully updated home offers an unbeatable location with plenty of space inside and out! Featuring a rare, heated, 3-car tandem garage, youâ€™ll have all the room you need for vehicles, a workshop, or extra storage for toys. Inside, enjoy a renovated kitchen with newer appliances, perfect for cooking and entertaining. The home has new vinyl plank flooring throughout, adding modern style and durability. With 3+1 bedrooms and 3 bathrooms, thereâ€™s plenty of space for the whole family. Step outside to a large backyard, ideal for relaxing or hosting gatherings. Perfect location, within walking distance to schools, shopping and dining! Donâ€™t miss this incredible opportunity in the sought-after community of Nottingham!

Built in 1989

Essential Information

MLS® #	E4426501
Price	\$524,900
Bedrooms	4
Bathrooms	3.00
Full Baths	3
Square Footage	1,313
Acres	0.00
Year Built	1989



Type	Single Family
Sub-Type	Detached Single Family
Style	4 Level Split
Status	Active

Community Information

Address	61 Nottingham Road
Area	Sherwood Park
Subdivision	Nottingham
City	Sherwood Park
County	ALBERTA
Province	AB
Postal Code	T8A 5L5

Amenities

Amenities	No Animal Home, No Smoking Home, Vaulted Ceiling
Parking	Tandem, Triple Garage Attached

Interior

Interior Features	ensuite bathroom
Appliances	Dishwasher-Built-In, Dryer, Garage Control, Garage Opener, Hood Fan, Oven-Built-In, Oven-Microwave, Refrigerator, Stove-Countertop Gas, Washer, Window Coverings
Heating	Forced Air-1, Natural Gas
Stories	3
Has Basement	Yes
Basement	Full, Partially Finished

Exterior

Exterior	Wood, Brick, Vinyl
Exterior Features	Fenced, Golf Nearby, No Back Lane, Schools, Shopping Nearby
Roof	Asphalt Shingles
Construction	Wood, Brick, Vinyl
Foundation	Concrete Perimeter

School Information

Elementary	Brentwood Elementary
Middle	FR Haythorne
High	Bev Facey, Sal Comp

Additional Information

Date Listed March 20th, 2025

Days on Market 15

Zoning Zone 25

DATA IS DEEMED RELIABLE BUT IS NOT GUARANTEED ACCURATE BY THE REALTORS® ASSOCIATION OF EDMONTON. COPYRIGHT 2025 BY THE REALTORS® ASSOCIATION OF EDMONTON. ALL RIGHTS RESERVED. Trademarks are owned or controlled by the Canadian Real Estate Association (CREA) and identify real estate professionals who are members of CREA (REALTOR®, REALTORS®) and/or the quality of services they provide (MLS®, Multiple Listing Service®)

Listing information last updated on April 4th, 2025 at 4:02pm MDT