

\$69,900 - 17 River Ridge Estates, Rural Wetaskiwin County

MLS® #E4426180

\$69,900

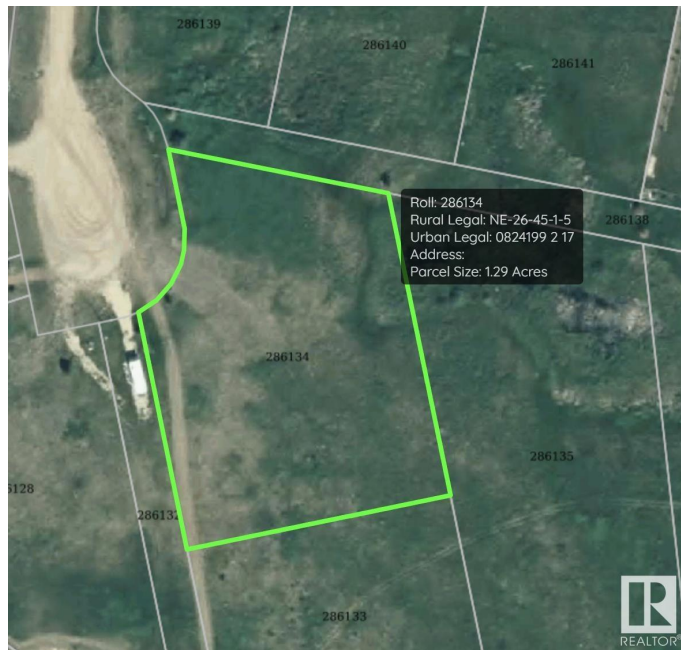
0 Bedroom, 0.00 Bathroom,
Rural on 1.29 Acres

River Ridge Estates_CWET, Rural Wetaskiwin
County, AB

Welcome to your dream location in River Ridge Estate! This exceptional 1.29-acre property boasts breathtaking views of the Battle River Valley, offering a perfect backdrop for your future home. With abundant wildlife and stunning sunsets, you'll find tranquility in this serene setting. The land features a gentle ridge, making development a breeze. Access is a recently paved access from Highway 13, with only a short stretch of gravel to reach your lot. Just 5 km from the charming village of Pigeon Lake, you'll enjoy convenient shopping and dining options. Families will appreciate the proximity to schools, making this an ideal spot for everyone. Golf enthusiasts will love the 18-hole golf course located right across the road, providing a perfect way to unwind. Donâ€™t miss this opportunity to create your own slice of paradise in River Ridge Estate.

Essential Information

MLS® #	E4426180
Price	\$69,900
Bathrooms	0.00
Acres	1.29
Type	Rural



Sub-Type	Vacant Lot/Land
Status	Active

Community Information

Address	17 River Ridge Estates
Area	Rural Wetaskiwin County
Subdivision	River Ridge Estates_CWET
City	Rural Wetaskiwin County
County	ALBERTA
Province	AB
Postal Code	T0C 2V0

Exterior

Exterior Features	Golf Nearby, Private Setting, River View, Rolling Land, Schools, Shopping Nearby
-------------------	--

Additional Information

Date Listed	March 18th, 2025
Days on Market	31
Zoning	Zone 90

DATA IS DEEMED RELIABLE BUT IS NOT GUARANTEED ACCURATE BY THE REALTORS® ASSOCIATION OF EDMONTON. COPYRIGHT 2025 BY THE REALTORS® ASSOCIATION OF EDMONTON. ALL RIGHTS RESERVED. Trademarks are owned or controlled by the Canadian Real Estate Association (CREA) and identify real estate professionals who are members of CREA (REALTOR®, REALTORS®) and/or the quality of services they provide (MLS®, Multiple Listing Service®)

Listing information last updated on April 18th, 2025 at 3:02pm MDT