

Courtesy Of Benita E Pashko Of RE/MAX Elite

\$429,900 - 8803 152b Avenue, Edmonton

MLS® #E4425980

\$429,900

3 Bedroom, 2.00 Bathroom, 998 sqft

Single Family on 0.00 Acres

Evansdale, Edmonton, AB

TIMELESS CHARACTER MEETS MODERN FUNCTIONALITY IN EVANSDALE!!! This EXTENSIVELY RENOVATED 3 bedroom family home is waiting for you to call it "Home"!

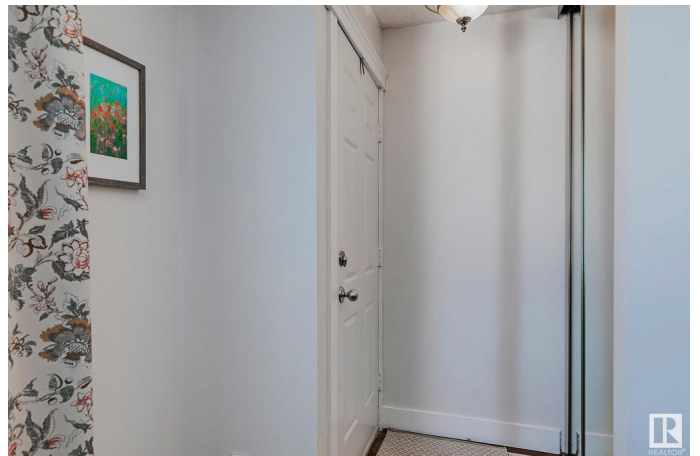
The **STUNNING NEW KITCHEN** boasts cabinets to the ceiling, newer **STAINLESS STEEL** appliances & **NEW FLOORING THROUGHOUT**. The 4pc bath on the main level has been **FULLY RENOVATED**. There's a lovely gas fireplace in the living room! In your **FULLY FINISHED BASEMENT**, you will find a full 4pc bathroom, **GAMES AREA**, and a convenient **SECOND KITCHEN**, which is ideal for entertaining! The family room is accented by a cozy, freestanding **GAS FIREPLACE**. This home also has **NEW WINDOWS & SHINGLES!** Patio doors lead to your **NEW DECK!** The yard is fully fenced with **MAINTENANCE FREE** chain link with weave! If the hot weather isn't your cup of tea, come on back inside where it's **FULLY AIR CONDITIONED!** There's a man cave as well!!! (double detached heated garage with 220V wiring). Situated close to schools, shopping and public transportation. Your new chapter begins here!

Built in 1981

Essential Information

MLS® #

E4425980



| | |
|----------------|------------------------|
| Price | \$429,900 |
| Bedrooms | 3 |
| Bathrooms | 2.00 |
| Full Baths | 2 |
| Square Footage | 998 |
| Acres | 0.00 |
| Year Built | 1981 |
| Type | Single Family |
| Sub-Type | Detached Single Family |
| Style | Bungalow |
| Status | Active |

Community Information

| | |
|-------------|------------------|
| Address | 8803 152b Avenue |
| Area | Edmonton |
| Subdivision | Evansdale |
| City | Edmonton |
| County | ALBERTA |
| Province | AB |
| Postal Code | T5E 6G1 |

Amenities

| | |
|----------------|--|
| Amenities | Deck, Detectors Smoke, Hot Water Natural Gas, No Smoking Home, Vinyl Windows |
| Parking Spaces | 4 |
| Parking | 220 Volt Wiring, Double Garage Detached, Heated |

Interior

| | |
|--------------|---|
| Appliances | Air Conditioning-Central, Dishwasher-Built-In, Dryer, Garage Opener, Microwave Hood Fan, Storage Shed, Vacuum System Attachments, Vacuum Systems, Washer, Window Coverings, See Remarks, Refrigerators-Two, Stoves-Two, Garage Heater |
| Heating | Forced Air-1, Natural Gas |
| Fireplace | Yes |
| Fireplaces | Freestanding, Glass Door, Stone Facing |
| Stories | 2 |
| Has Basement | Yes |
| Basement | Full, Finished |

Exterior

| | |
|-------------------|---|
| Exterior | Wood, Stone, Stucco |
| Exterior Features | Back Lane, Fenced, Landscaped, Low Maintenance Landscape, Playground Nearby, Public Transportation, Schools |
| Roof | Asphalt Shingles |
| Construction | Wood, Stone, Stucco |
| Foundation | Concrete Perimeter |

School Information

| | |
|------------|------------------------|
| Elementary | Evansdale School |
| Middle | Dickensfield School |
| High | Queen Elizabeth School |

Additional Information

| | |
|----------------|------------------|
| Date Listed | March 16th, 2025 |
| Days on Market | 20 |
| Zoning | Zone 02 |

DATA IS DEEMED RELIABLE BUT IS NOT GUARANTEED ACCURATE BY THE REALTORS® ASSOCIATION OF EDMONTON. COPYRIGHT 2025 BY THE REALTORS® ASSOCIATION OF EDMONTON. ALL RIGHTS RESERVED. Trademarks are owned or controlled by the Canadian Real Estate Association (CREA) and identify real estate professionals who are members of CREA (REALTOR®, REALTORS®) and/or the quality of services they provide (MLS®, Multiple Listing Service®)

Listing information last updated on April 5th, 2025 at 1:47am MDT