

Courtesy Of Brett Loree Of Century 21 Masters

\$624,900 - 7823 Erasmus Wynd, Edmonton

MLS® #E4425517

\$624,900

3 Bedroom, 2.50 Bathroom, 2,074 sqft
Single Family on 0.00 Acres

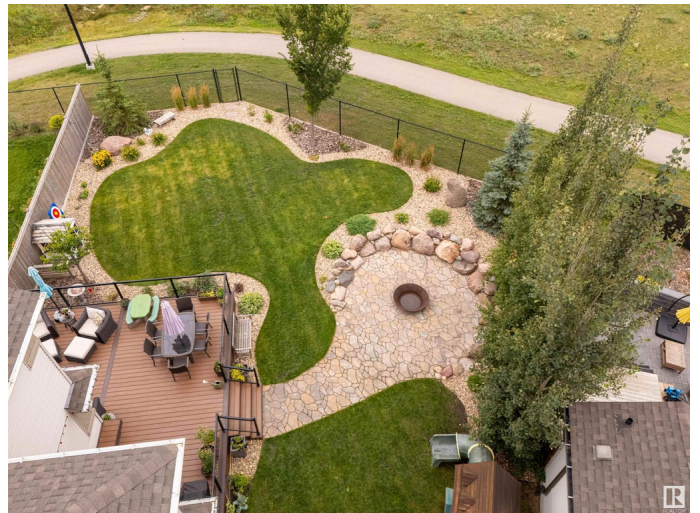
Edgemont (Edmonton), Edmonton, AB

Welcome to 7823 Erasmus Wynd, where comfort and elegance meet in a stunning setting. The beautiful pie-shaped lot with meticulously landscaped grounds, offering a serene and picturesque environment. Nestled against a lush park and future school site, this home provides both tranquility and convenience. Inside, discover a thoughtfully designed layout perfect for modern family living. The upper level features three spacious bedrooms, including a luxurious master suite with a fantastic walk-in closet. A versatile bonus room provides additional space for a home office, playroom or media area, catering to your family's unique needs. The expansive, irrigated backyard is a true highlight, with ample space for outdoor entertaining, gardening, or relaxing while enjoying the scenic views of the adjacent park. A large composite deck (TREX) with thoughtful design features on the biggest pie lot in the area. This home is ideal for families seeking both comfort and convenience.

Built in 2017

Essential Information

MLS® #	E4425517
Price	\$624,900
Bedrooms	3



Bathrooms	2.50
Full Baths	2
Half Baths	1
Square Footage	2,074
Acres	0.00
Year Built	2017
Type	Single Family
Sub-Type	Detached Single Family
Style	2 Storey
Status	Active

Community Information

Address	7823 Erasmus Wynd
Area	Edmonton
Subdivision	Edgemont (Edmonton)
City	Edmonton
County	ALBERTA
Province	AB
Postal Code	T6M 2W3

Amenities

Amenities	Ceiling 9 ft., Detectors Smoke, No Smoking Home, HRV System
Parking Spaces	2
Parking	Double Garage Attached

Interior

Interior Features	ensuite bathroom
Appliances	Dishwasher-Built-In, Dryer, Hood Fan, Oven-Microwave, Refrigerator, Stove-Gas, Washer, Window Coverings
Heating	Forced Air-1, Natural Gas
Fireplace	Yes
Fireplaces	Stone Facing
Stories	2
Has Basement	Yes
Basement	Full, Unfinished

Exterior

Exterior	Wood, Vinyl
Exterior Features	Backs Onto Park/Trees, Landscaped, No Back Lane, No Through Road,

	Schools, Shopping Nearby
Roof	Asphalt Shingles
Construction	Wood, Vinyl
Foundation	Concrete Perimeter

Additional Information

Date Listed	March 13th, 2025
Days on Market	1
Zoning	Zone 57

DATA IS DEEMED RELIABLE BUT IS NOT GUARANTEED ACCURATE BY THE REALTORS® ASSOCIATION OF EDMONTON. COPYRIGHT 2025 BY THE REALTORS® ASSOCIATION OF EDMONTON. ALL RIGHTS RESERVED. Trademarks are owned or controlled by the Canadian Real Estate Association (CREA) and identify real estate professionals who are members of CREA (REALTOR®, REALTORS®) and/or the quality of services they provide (MLS®, Multiple Listing Service®)

Listing information last updated on March 14th, 2025 at 8:02am MDT