

Courtesy Of Darcy Powlik Of RE/MAX Real Estate

# \$1,369,000 - 28179 Twp Road 485, Rural Leduc County

MLS® #E4425487

**\$1,369,000**

5 Bedroom, 3.00 Bathroom, 2,010 sqft

Rural on 79.00 Acres

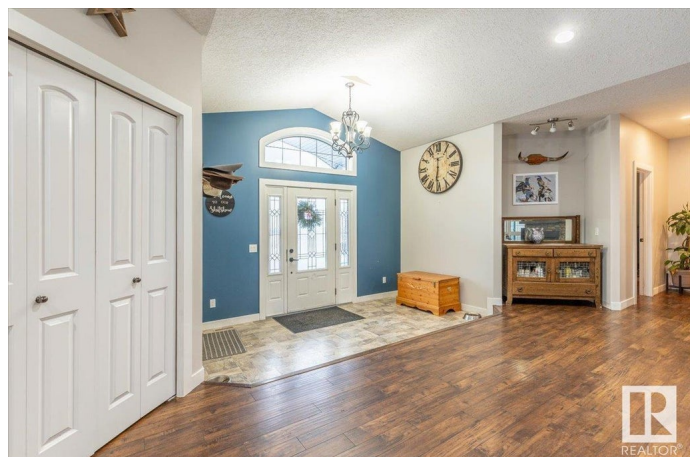
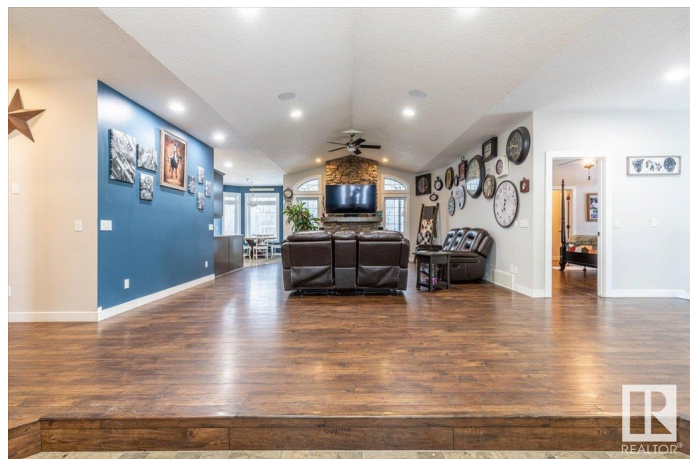
None, Rural Leduc County, AB

This stunning property holds a 2009.96 sq/ft home, 54'x72' Shop, Barn, and more, all situated on 79 Acres! Inside the beautiful home to the main floor you'll find an open living room, dining room, and kitchen with a corner pantry. Three bedrooms are also on the main floor including the primary bedroom that has its own 4 piece ensuite, walk-in closet, and access to the back deck that has a hot tub and gazebo. Another 4 piece bathroom, and mudroom/laundry room with access to the oversized double attached heated garage. The basement has a HUGE family room with custom woodwork, two more bedrooms, and a 3 piece bathroom. The beautiful fully finished shop has 2 overhead doors, an office, 3 piece bathroom with laundry, radiant tub heaters along both sides, and 220 power. The Barn is also finished with a metal roof, has electric heat, and a lean shelter off the side. A Stock Waterer, a variety of fencing, extra farmable land, and 6 campsites make up the remainder of the land with 3 sites having power hookups.

Built in 2009

## Essential Information

MLS® #	E4425487
Price	\$1,369,000
Bedrooms	5



Bathrooms	3.00
Full Baths	3
Square Footage	2,010
Acres	79.00
Year Built	2009
Type	Rural
Sub-Type	Detached Single Family
Style	Raised Bungalow
Status	Active

### **Community Information**

Address	28179 Twp Road 485
Area	Rural Leduc County
Subdivision	None
City	Rural Leduc County
County	ALBERTA
Province	AB
Postal Code	T0C 2P0

### **Amenities**

Features	Deck, Gazebo, Hot Tub, Parking-Extra, Workshop, See Remarks
----------	---

### **Interior**

Interior Features	ensuite bathroom
Heating	Forced Air-1, Natural Gas
Fireplace	Yes
Stories	2
Has Basement	Yes
Basement	Full, Finished

### **Exterior**

Exterior	Wood
Exterior Features	Cross Fenced, Landscaped, Level Land, Private Setting, Schools, Treed Lot, See Remarks
Construction	Wood
Foundation	Concrete Perimeter

### **Additional Information**

Date Listed	March 13th, 2025
-------------	------------------

Days on Market 36

Zoning Zone 90

DATA IS DEEMED RELIABLE BUT IS NOT GUARANTEED ACCURATE BY THE REALTORS® ASSOCIATION OF EDMONTON. COPYRIGHT 2025 BY THE REALTORS® ASSOCIATION OF EDMONTON. ALL RIGHTS RESERVED. Trademarks are owned or controlled by the Canadian Real Estate Association (CREA) and identify real estate professionals who are members of CREA (REALTOR®, REALTORS®) and/or the quality of services they provide (MLS®, Multiple Listing Service®)

Listing information last updated on April 18th, 2025 at 2:47pm MDT