

\$345,800 - 21 2051 Towne Centre Boulevard, Edmonton

MLS® #E4423612

\$345,800

3 Bedroom, 2.50 Bathroom, 1,115 sqft
Condo / Townhouse on 0.00 Acres

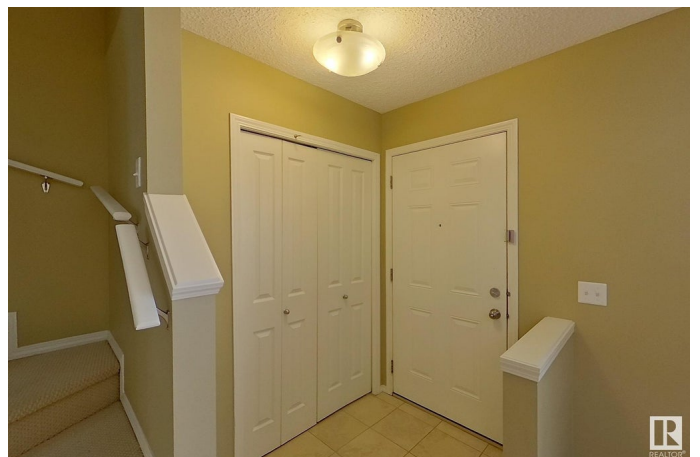
Terwillegar Towne, Edmonton, AB

This well kept 2 storey townhome, located in the MOSAIC RIDGE. Front facing south with park view! Main floor features open kitchen concept and looking over the DINING and LIVING room. Upper level offering 3 good sized bedrooms. Master room has W.I.C. with 3 piece full bath. Two more bedrooms and 4 piece full bath also located at the upper floor. Double attached garage with laundry room on the ground floor. Walking distance to REC CENTRE, PUBLIC TRANSIT, HIGH RANKING SCHOOLS. Close to SHOPPING and all amenities. Easy access to ANTHONY HENDAY and WHITEMUD freeway.

Built in 2007

Essential Information

MLS® #	E4423612
Price	\$345,800
Bedrooms	3
Bathrooms	2.50
Full Baths	2
Half Baths	1
Square Footage	1,115
Acres	0.00
Year Built	2007
Type	Condo / Townhouse
Sub-Type	Townhouse



Style 2 Storey
Status Active

Community Information

Address 21 2051 Towne Centre Boulevard
Area Edmonton
Subdivision Terwillegar Towne
City Edmonton
County ALBERTA
Province AB
Postal Code T6R 0G8

Amenities

Amenities Detectors Smoke, Parking-Visitor, Vinyl Windows
Parking Double Garage Attached

Interior

Interior Features ensuite bathroom
Appliances Dishwasher-Built-In, Dryer, Garage Control, Garage Opener, Microwave Hood Fan, Refrigerator, Stove-Electric, Washer
Heating Forced Air-1, Natural Gas
Stories 2
Has Basement Yes
Basement None, No Basement

Exterior

Exterior Wood, Vinyl
Exterior Features Cul-De-Sac, Fenced, Landscaped, Park/Reserve, Playground Nearby, Public Swimming Pool, Public Transportation, Schools, Shopping Nearby
Roof Asphalt Shingles
Construction Wood, Vinyl
Foundation Concrete Perimeter

Additional Information

Date Listed February 28th, 2025
Days on Market 12
Zoning Zone 14
HOA Fees 138
HOA Fees Freq. Annually

Condo Fee \$314

DATA IS DEEMED RELIABLE BUT IS NOT GUARANTEED ACCURATE BY THE REALTORS® ASSOCIATION OF EDMONTON. COPYRIGHT 2025 BY THE REALTORS® ASSOCIATION OF EDMONTON. ALL RIGHTS RESERVED. Trademarks are owned or controlled by the Canadian Real Estate Association (CREA) and identify real estate professionals who are members of CREA (REALTOR®, REALTORS®) and/or the quality of services they provide (MLS®, Multiple Listing Service®)

Listing information last updated on March 12th, 2025 at 2:17pm MDT