

\$315,000 - 606 2510 109 Street, Edmonton

MLS® #E4423093

\$315,000

1 Bedroom, 1.00 Bathroom, 828 sqft
Condo / Townhouse on 0.00 Acres

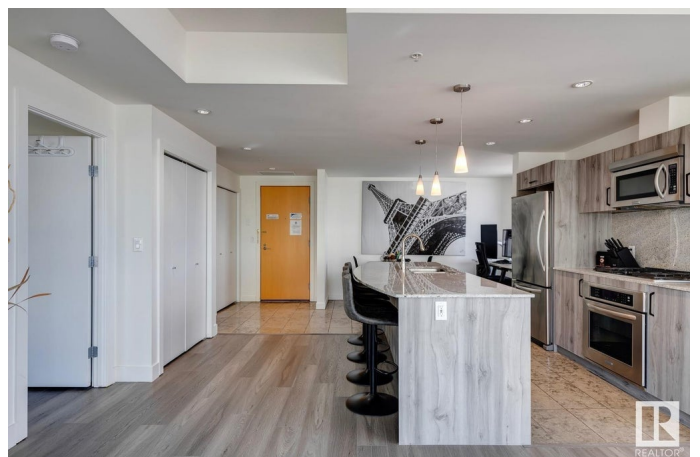
Ermineskin, Edmonton, AB

Beautiful and luxurious condo in prestigious Century Park! This 828 sqft, 1 bed/1 bath, 6th floor, corner unit offers an open and unique floor plan w/an abundance of additional windows that allow for loads of natural light. Gorgeous kitchen w/premium cabinetry, granite counters/backsplash, s.s. appliances, and tile floors. Large living/dining areas w/new vinyl flooring, beautiful fireplace, and access to the NW facing patio. Large bedroom w/stunning 4-pc bath, and separate laundry area. Two titled (side by side) parking stalls and storage cage. Condo fees include ALL UTILITIES. Located steps from shops, restaurants, the LRT and all other amenities of Century Park. Close to the Anthony Henday, Whitemud and Calgary Trail. Perfect for a first time buyer, investor, young professional, or downsizing. Awesome condo in a great location!

Built in 2008

Essential Information

MLS® #	E4423093
Price	\$315,000
Bedrooms	1
Bathrooms	1.00
Full Baths	1
Square Footage	828



Acres	0.00
Year Built	2008
Type	Condo / Townhouse
Sub-Type	Lowrise Apartment
Style	Single Level Apartment
Status	Active

Community Information

Address	606 2510 109 Street
Area	Edmonton
Subdivision	Ermineskin
City	Edmonton
County	ALBERTA
Province	AB
Postal Code	T6J 2X1

Amenities

Amenities	Air Conditioner, Exercise Room, No Animal Home, No Smoking Home, Parking-Visitor, Patio, Security Door, Storage-Locker Room, Storage Cage
Parking	Double Indoor, Heated, Underground

Interior

Interior Features	ensuite bathroom
Appliances	Dishwasher-Built-In, Dryer, Garage Opener, Microwave Hood Fan, Oven-Built-In, Refrigerator, Stove-Countertop Gas, Washer, Window Coverings
Heating	Heat Pump, Natural Gas
Fireplace	Yes
Fireplaces	Tile Surround
# of Stories	7
Stories	1
Has Basement	Yes
Basement	None, No Basement

Exterior

Exterior	Concrete, Brick, Metal
Exterior Features	Flat Site, Golf Nearby, Landscaped, Playground Nearby, Public Transportation, Schools, Shopping Nearby
Roof	Tar & Gravel

Construction	Concrete, Brick, Metal
Foundation	Concrete Perimeter

School Information

Elementary	Steinhauer
Middle	DS Mackenzie
High	Harry Ainlay

Additional Information

Date Listed	February 26th, 2025
Days on Market	14
Zoning	Zone 16
Condo Fee	\$817

DATA IS DEEMED RELIABLE BUT IS NOT GUARANTEED ACCURATE BY THE REALTORS® ASSOCIATION OF EDMONTON. COPYRIGHT 2025 BY THE REALTORS® ASSOCIATION OF EDMONTON. ALL RIGHTS RESERVED. Trademarks are owned or controlled by the Canadian Real Estate Association (CREA) and identify real estate professionals who are members of CREA (REALTOR®, REALTORS®) and/or the quality of services they provide (MLS®, Multiple Listing Service®)

Listing information last updated on March 12th, 2025 at 2:32pm MDT