

# \$354,900 - 402 11140 68 Avenue, Edmonton

MLS® #E4421041

**\$354,900**

2 Bedroom, 2.00 Bathroom, 1,023 sqft  
Condo / Townhouse on 0.00 Acres

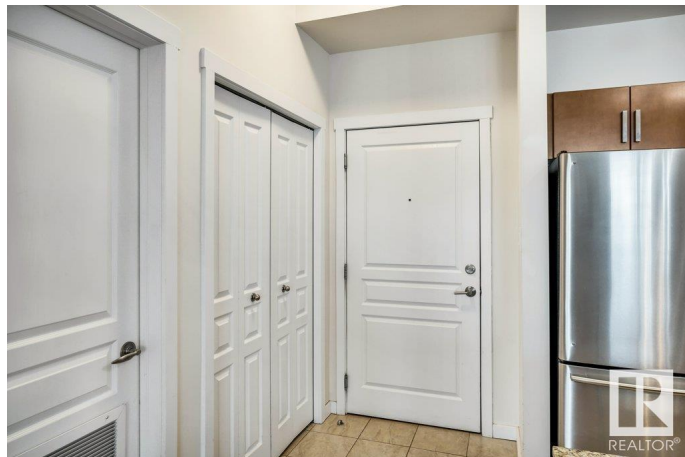
Parkallen (Edmonton), Edmonton, AB

TOP FLOOR condo in the fantastic concrete building of Park One West. This 2 bedroom, 2 bathroom unit is located in the wonderful, central community of Parkallen, right next to the University of Alberta. This bright, inviting home has been well taken care of and is ready for a new owner. The kitchen features modern cabinets, granite countertops and stainless steel appliances. The living room is very inviting with plenty of windows, corner fireplace and patio doors leading out to a private deck. This unit also comes with it's own underground, titled parking stall with storage. With central A/C, exercise room, social room and great Edmonton location this place has it all!

Built in 2005

## Essential Information

MLS® #	E4421041
Price	\$354,900
Bedrooms	2
Bathrooms	2.00
Full Baths	2
Square Footage	1,023
Acres	0.00
Year Built	2005
Type	Condo / Townhouse



Sub-Type	Lowrise Apartment
Style	Single Level Apartment
Status	Active

### **Community Information**

Address	402 11140 68 Avenue
Area	Edmonton
Subdivision	Parkallen (Edmonton)
City	Edmonton
County	ALBERTA
Province	AB
Postal Code	T6H 2C2

### **Amenities**

Amenities	Deck, Detectors Smoke, No Animal Home, No Smoking Home, Vinyl Windows
Parking Spaces	1
Parking	Underground

### **Interior**

Interior Features	ensuite bathroom
Appliances	Dishwasher-Built-In, Microwave Hood Fan, Refrigerator, Stacked Washer/Dryer, Stove-Electric, Window Coverings
Heating	Heat Pump, Natural Gas
Fireplace	Yes
Fireplaces	Tile Surround
# of Stories	4
Stories	1
Has Basement	Yes
Basement	None, No Basement

### **Exterior**

Exterior	Concrete, Stucco
Exterior Features	Flat Site, Landscaped, Playground Nearby, Public Swimming Pool, Public Transportation, Shopping Nearby
Roof	SBS Roofing System
Construction	Concrete, Stucco
Foundation	Slab

### **Additional Information**

Date Listed February 9th, 2025

Days on Market 31

Zoning Zone 15

Condo Fee \$718

DATA IS DEEMED RELIABLE BUT IS NOT GUARANTEED ACCURATE BY THE REALTORS® ASSOCIATION OF EDMONTON. COPYRIGHT 2025 BY THE REALTORS® ASSOCIATION OF EDMONTON. ALL RIGHTS RESERVED. Trademarks are owned or controlled by the Canadian Real Estate Association (CREA) and identify real estate professionals who are members of CREA (REALTOR®, REALTORS®) and/or the quality of services they provide (MLS®, Multiple Listing Service®)

Listing information last updated on March 12th, 2025 at 7:02pm MDT