

\$100,000 - 3524 Township Road 542, Rural Lac Ste. Anne County

MLS® #E4366734

\$100,000

0 Bedroom, 0.00 Bathroom,
Rural on 4.42 Acres

Paradise Estates, Rural Lac Ste. Anne
County, AB

Newly subdivided 4.42 acre lot ready for development in the subdivision of Paradise Estates. Only 10 minutes from Alberta Beach and half an hour from Stony Plain/Spruce Grove. Lot is mostly treed and offers great privacy. Buyer would bear the responsibility of developing an approach for access. GST applicable on sale. Dimensions on aerial photo approximate and for reference only.

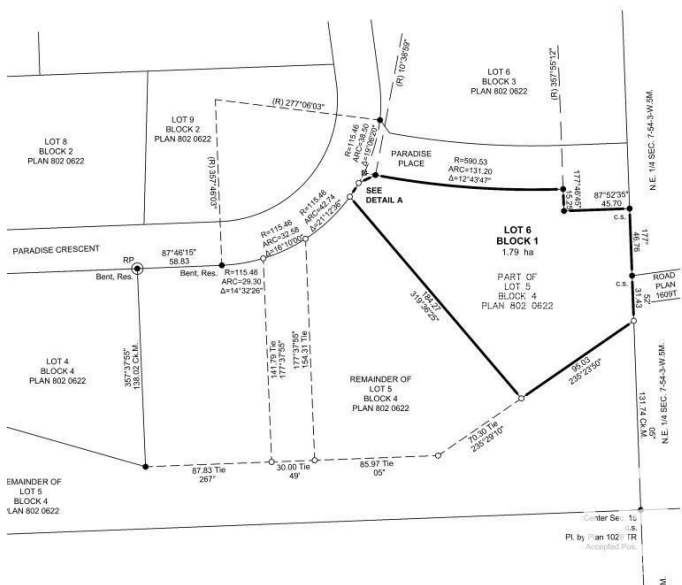


Essential Information

MLS® #	E4366734
Price	\$100,000
Bathrooms	0.00
Acres	4.42
Type	Rural
Sub-Type	Vacant Lot/Land
Status	Active

Community Information

Address	3524 Township Road 542
Area	Rural Lac Ste. Anne County
Subdivision	Paradise Estates
City	Rural Lac Ste. Anne County
County	ALBERTA



Province	AB
Postal Code	T0E 0A0

Exterior

Exterior Features	Treed Lot
-------------------	-----------

Additional Information

Date Listed	December 1st, 2023
-------------	--------------------

Days on Market	504
----------------	-----

Zoning	Zone 70
--------	---------

DATA IS DEEMED RELIABLE BUT IS NOT GUARANTEED ACCURATE BY THE REALTORS® ASSOCIATION OF EDMONTON. COPYRIGHT 2025 BY THE REALTORS® ASSOCIATION OF EDMONTON. ALL RIGHTS RESERVED. Trademarks are owned or controlled by the Canadian Real Estate Association (CREA) and identify real estate professionals who are members of CREA (REALTOR®, REALTORS®) and/or the quality of services they provide (MLS®, Multiple Listing Service®)

Listing information last updated on April 18th, 2025 at 4:02pm MDT